




Style: **MRk-135 IN**
Repeat: **24 x 48** (shown as Carpet Tile: 24x24-qtr)
Color: **AGED BRONZE**




YARN COLORS

- A  6025
- B  6179
- C  6060

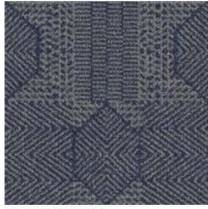


Style: **MRk-135 IN**
Repeat: **24x48** (shown as Carpet Tile: 24x24-qtr)
Color: **AGED BRONZE**

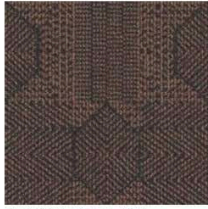
YARN COLORS

- A  6025
- B  6179
- C  6060

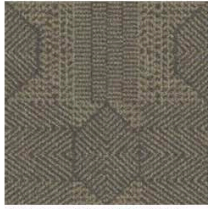
Colorways



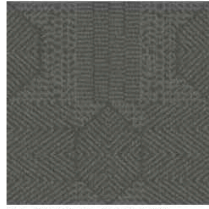
DENIM (NO MINIMUM)



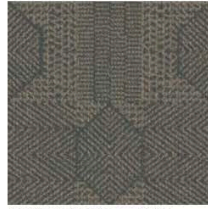
ADOBE (250 SY MINIMUM)



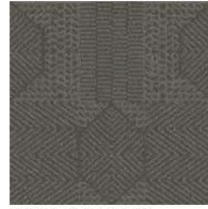
AGED BRONZE (NO MINIMUM)



FLANNEL (250 SY MINIMUM)



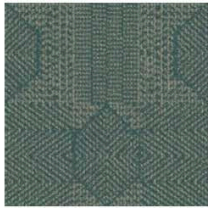
GRAFFITI (250 SY MINIMUM)



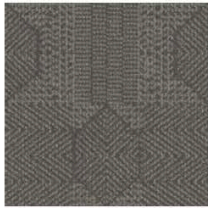
HENNA (250 SY MINIMUM)



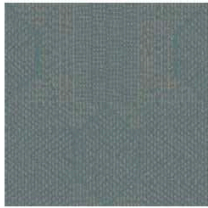
LUCID (250 SY MINIMUM)



MARITIME (250 SY MINIMUM)

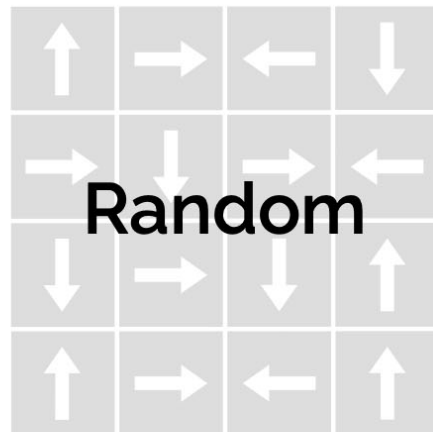
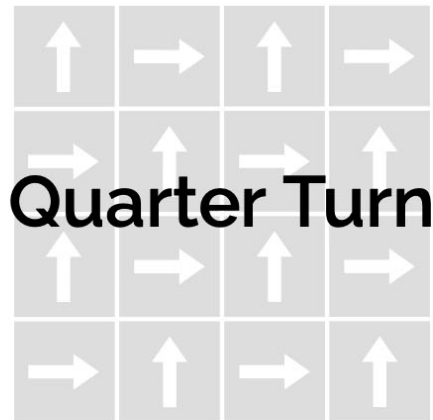
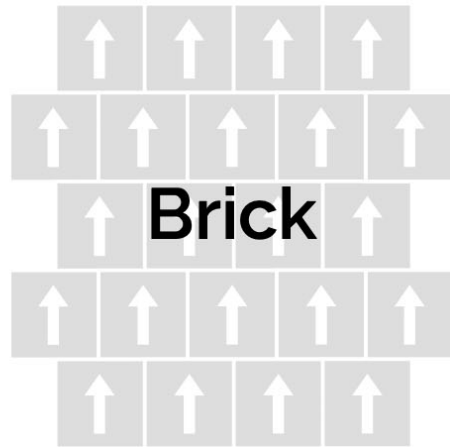
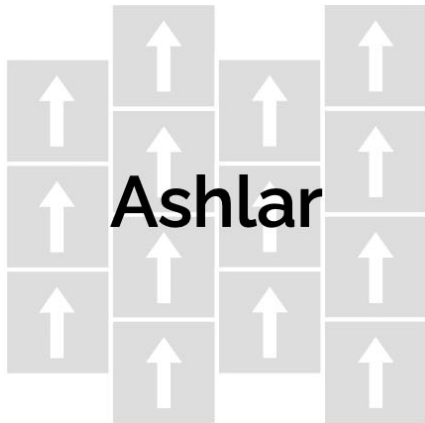


PRESSED FLINT (250 SY MINIMUM)



TUNDRA (250 SY MINIMUM)

INSTALLATION METHODS



TECHNICAL SPECS

carpet tile

Construction:	Infinity
Yarn Content:	100% Nylon
Dye Method:	Solution Dyed
Gauge:	1/10th
Yarn Weight Tufted:	24 oz
Stitch Rate:	10 SPI
Secondary Backing:	MOD-FLEX (standard) MOD-AIRE (available as upgrade)
Pile Height:	.315"
Total Thickness:	.375"
Pattern Repeat:	NA
Tile Size:	24" X 24"

(18" X 36" | 12" X 48" Planks available upon request; minimums apply)

Performance

Flame Resistance:	Passes DOC FF-1-70
Static Control:	Less than 3.5 KV
Flooring Radiant Panel:	Class 1 (ASTM 648)
Smoke Density:	Less than .450 (ASTM E-622)
Soil Resistance:	Commercial Anti-Soil Protection

Warranties

Wear:	10 Year
Static:	Lifetime
Stain:	Lifetime
Colorfastness:	Lifetime